

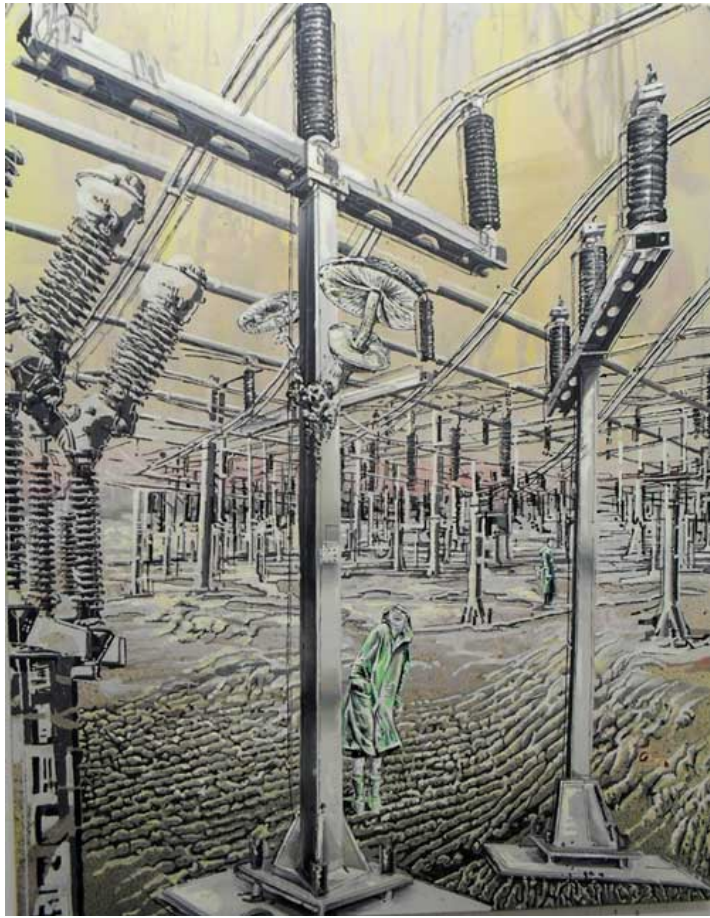


## **YULIA KAZAKOVA**

10 Nov – 30 Dec 2011

Gallery Bergman Berglind Contemporary Art  
49, rue Baudouin L-1218 Luxembourg-Hollerich  
[www.bergmanberglind.com](http://www.bergmanberglind.com)





***Ich glaub ich stehe im Wald,**  
2011, Acrylic on canvas, 180 x  
150 cm*

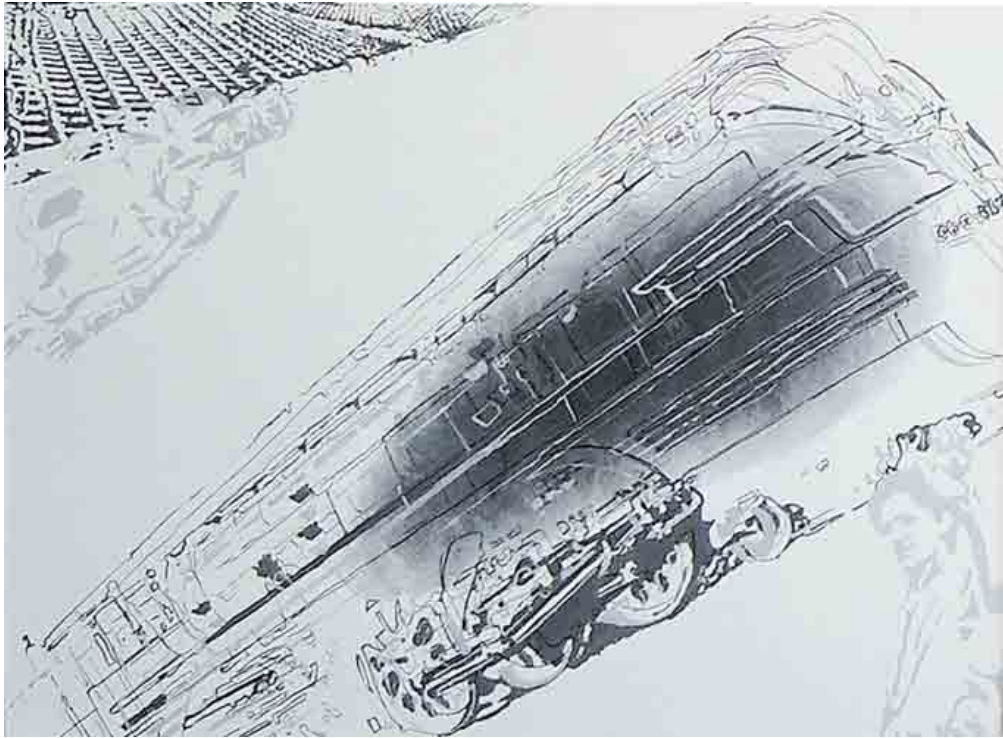


***Flugraum, 2009***  
*Acrylic on canvas, 210x140 cm*

**Yulia Kazakova** is a young Russian artist born in 1980 who studied fine arts and graphics at the Moscow school of arts and in Berlin at the Berliner Universität der Künste where she was a master student of Wolfgang Petrick. Her work has been shown in several countries and she is represented by galleries in Germany, Switzerland and Sao Paolo.

The new Luxembourg representation showcases her international profile and successful career so far. Kazakova's paintings are sold out at fairs and can already be found in several private art collections. The exhibition in Luxembourg will show works from different series of Kazakova's work, the Model Kit Series and the Industrial Series. In the Model Kit Series, the viewer will be looking at a painted collage of technical vehicles like busses, cars or ships combined with human figures which seem to be watching the vehicle. The graphic details of the work invite the observer of the painting to step into a world on its own where he will discover a contrast between the technical reality and human existence. In the Industrial Series, Kazakova uses motives which refer to industrial sites that were once considered the triumph of technical development but which meanwhile have been reduced to a mere background in today's environment. In Kazakova's work there is a contextual dissociation of these industrial sites or objects followed by a subsequent transposition into another context. Kazakova puts a focus on the cultural reflection and understanding of these sites and objects beyond their function. The different layers, the different positions of elements and the specific features of industrial architecture are reflected in the style and the composition of the painting. Perspective plays a key role in the work of Kazakova. In her paintings she combines distance and proximity, background and foreground, lines and space. Abstract elements are combined with realistically painted moments.

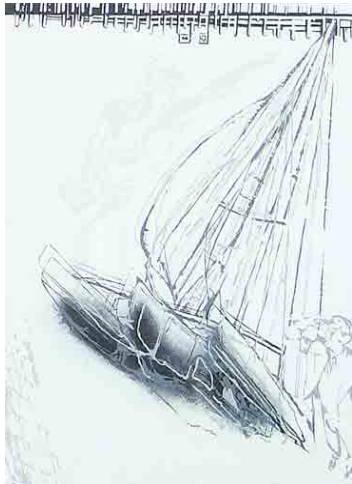




***Modul, Zug“ Element#1, 2007***  
*Acrylic on paper, 50x37,5cm*



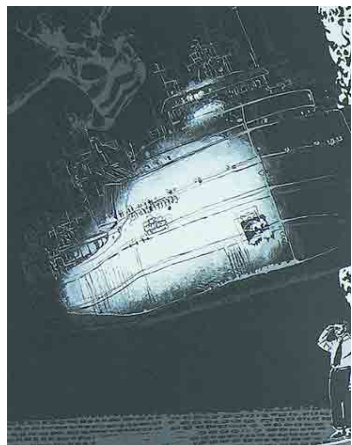
***Ruhiger Hafen II, 2008***  
*Acrylic on canvas, 100x130 cm*



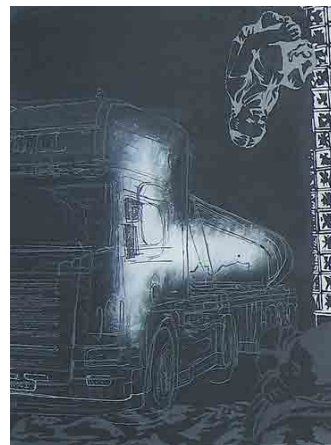
**Modul „Schiff“ Element#3, 2007**  
 Acrylic on paper, 50x37,5 cm



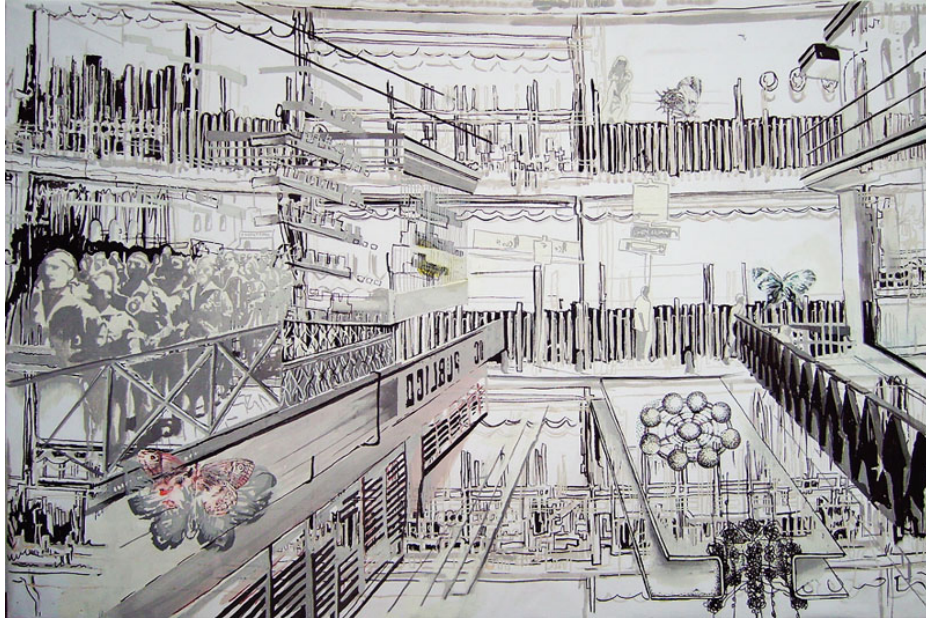
**Modul „Flugzeug“ Element#3, 2007**  
 Acrylic on paper, 50x37,5cm



**Modul „Schiff“, Element#6, 2007**  
 Acrylic on paper, 50x37,5cm



**Modul „Auto“ Element#6, 2007**  
 Acrylic on paper, 50x37,5cm



*Untitled, 2006*  
*Acrylic, black inc on paper, 50x75cm*

