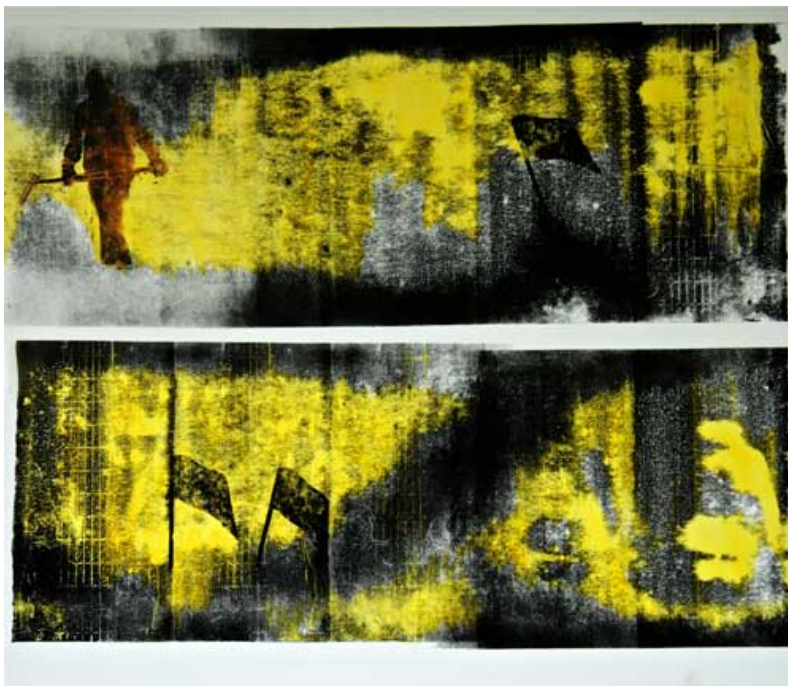




JÖRG SÖCHTING

30 Jun – 11 Aug 2012

Gallery Bergman Berglind Contemporary Art
49, rue Baudouin L-1218 Luxembourg-Hollerich
www.bergmanberglind.com



Rechenmann 2012, oil on canvas, 70x80cm



*Nichtswirdwas II, 2012, oil on canvas,
80x70cm*

At first sight the observer recognizes the work of **Jörg Söchting** as abstract compositions. Upon further consideration, however, a story is detected. This story emerges like from an old black and white film from the “film noir” era or a scene from a documentary of the first moon landing. The pictures also recall historical scenes of workers or their struggle, in which humans and flags stand out as symbols. Ultimately the observer discovers symbols and figures, which presents him or her with a challenge to interpret them as parts of their own history and actions.

Söchting’s work is influenced by impressions collected through his many journeys in politically and socially diverse regions of the world. In addition to his travels, labour in the forest and nature, and as a beekeeper has an interactive influence on his creative work.

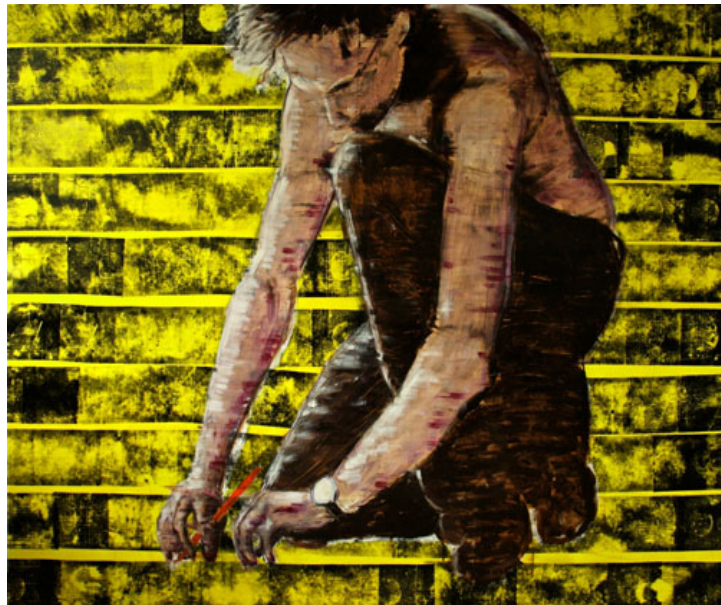
He mainly uses canvas as basis for his artworks, but also other materials like paper, cardboard and wood. Printed motifs are placed side by side or in layers on top of each other. Besides the classical technique of oil painting with a brush he uses an oil printing technique and as well spray cans.



Satte Wiesen, 2012, oil on canvas, 165x135cm



(SOS)Red Flags, 2012, oil on canvas, 60x50cm



Linieziehen, 2012, oil on canvas, 165x195cm



Nichtswirdwas I, 2012, oil on canvas, 175x175cm



Ein Männlein steht im Walde ..., 2012, oil on canvas, 50x40cm

